

Riverside County Sheriff's Department takes Crime Mapping to the Next Level

GST CrimeMap 3.0 Paves the Way

As one of the largest departments in the state of California, the Riverside County Sheriff's Department with its 2,200 sworn officers covers a geographic area of 8,000 square miles.



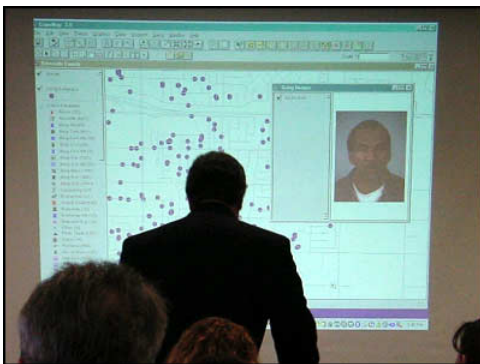
Mobile Crime Mapping: Crime Analysis Unit Supervisor Brian Gray in the CART (Crime Analysis Response Team) van.

To cover such a vast area, the department's top-flight crime analyst team relies on the GST CrimeMap, a powerful and user-friendly mapping and analytical tool, developed by GeoSpatial Technologies, Inc.

"Before GST CrimeMap, we like many agencies suffered through the weight of double data input," says Brian Gray, Crime Analysis Unit Supervisor at the RCSD. "We maximized the use of pin mapping software and longed to take advantage of already developed tools available to a Geographical Information System. We didn't have the time to script queries for every spatial analytical need."

GST CrimeMap changed all that, says Gray, who is responsible for the supervision and training of all analysts throughout Riverside County and is a member of the department's pioneering CART (Crime Analysis Response Team). "GST CrimeMap offers law enforcement the advantage of the most powerful GIS to users who need little more than a basic understanding of databases," he says.

No longer are analysts mired in data, Gray says. "GST CrimeMap is the light that enables us to see into the darkness of data," he says. "We now have the ability to collect and store data, to evaluate and analyze its meaning and to quickly disseminate information that not only effects the arrest process but impacts the clearance of cases as well."



Brian Gray, Crime Analysis Unit Supervisor of Riverside County Sheriff's Department, demonstrated the powerful features of GST CrimeMap 3.0.



Michele Throne, Senior Crime Analyst of Riverside County Sheriff's Department, discussed issues related to using GIS for investigation.



Dallas Tehmurasp, Crime Analyst of Moreno Valley Police Department in Riverside County, shared about the administrative side of crime analyst: Grand Theft Auto Series.